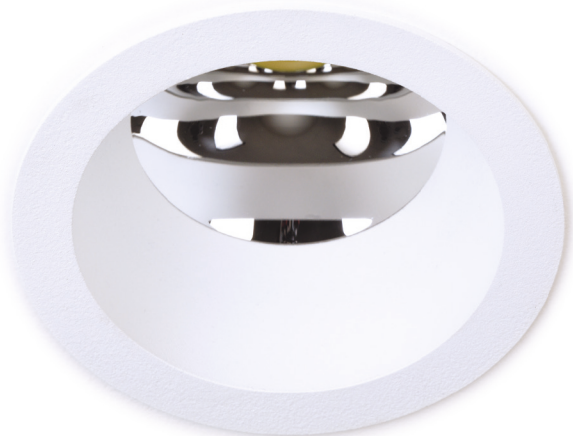
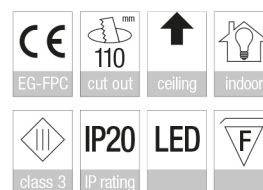
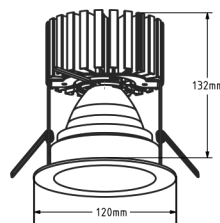
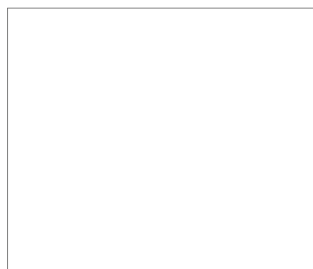


EDNA DEEP



REF A6126W Edna Deep white
A6126B Edna Deep black

LED	Xicato Tridonic
LED LM OUTPUT	1.300 up to 4.350 lm
POWER CONS.	according to lumen output - see table p. 255
COLOR TEMP.	2.700 / 3.000 / 4.000 K
CRI	80 up to +95
COLOR QUALITY	Xicato: artist / beauty vibrant / vibrant artist Tridonic: fashion / pure white fish / meat / gold / fruit
REFLECTOR	Xicato: 20° / 40° / 60° (11° only available in 1.300 lm) Tridonic: 20° / 40° / 60°
FINISH	white RAL 9016 tex black RAL 9005 tex
ADJUSTABLE	n/a
CUT-OUT	Ø 110 mm
DRIVE CURRENT	supplied with driver



MODULE	MODEL	REFERENCE	LM OUTPUT	CRI / CCT	BEAM	DIMMING
XICATO XTM	EDNA DEEP X WHITE EDNA DEEP X BLACK	A6126W A6126B	1.300 lm	827 - 830 - 840 - V830 927 - 930 - 940 - V930 - BT	11°	ND PD A D
			2.000 lm	827 - 830 - 840 - V830 927 - 930 - 940 - V930 - BT	20°	
			3.000 lm	827 - 830 - 840 - V830 927 - 930 - 940 - V930 - BT	40°	
			3.850 lm	827 - 830 - 840 - V830	60°	

Reference builder: f.e.: A6126W/1300/V9530/20°/PD

ND: non dimmable / PD: phase dimming / A: 1-10V / D: DALI

MODULE	MODEL	REFERENCE	LM OUTPUT	CRI / CCT	BEAM	DIMMING
TRIDONIC SLE	EDNA DEEP T WHITE EDNA DEEP T BLACK	T6126*927/_/_°/ND	3.870 lm	927	20° 40° 60°	ND DIMMING ON REQUEST
		T6126*930/_/_°/ND	4.130 lm	930		
		T6126*940/_/_°/ND	4.330 lm	940		
		T6126*9730/_/_°/ND	3.520 lm	9730		
		T6126*FA/_/_°/ND	3.860 lm	FASHION		
		T6126*PW930/_/_°/ND	4.180 lm	PURE WHITE 930		
		T6126*PW940/_/_°/ND	4.350 lm	PURE WHITE 940		
		T6126*FIS/_/_°/ND	3.600 lm	FISH 965		
		T6126*M+/_/_°/ND	2.600 lm	MEAT+		
		T6126*FM/_/_°/ND	2.550 lm	FRESH MEAT		
		T6126*G/_/_°/ND	3.900 lm	GOLD		
T6126*G+/_/_°/ND	2.900 lm	GOLD+				
T6126*FR/_/_°/ND	3.600 lm	FRUIT				

*W (white) or B (black)

LOWER LM OUTPUT
ALSO AVAILABLE

ND: non dimmable